



BrainDumps  
Collection

# CheckPoint

156-315.77 Exam

CheckPoint Check Point Certified Security Expert Exam

Thank you for Downloading 156-315.77 exam PDF Demo

You can also try our 156-315.77 practice exam software

**Download Free Demo**

<https://www.braindumpscollection.com/156-315.77.html>

DEMO  
VERSION

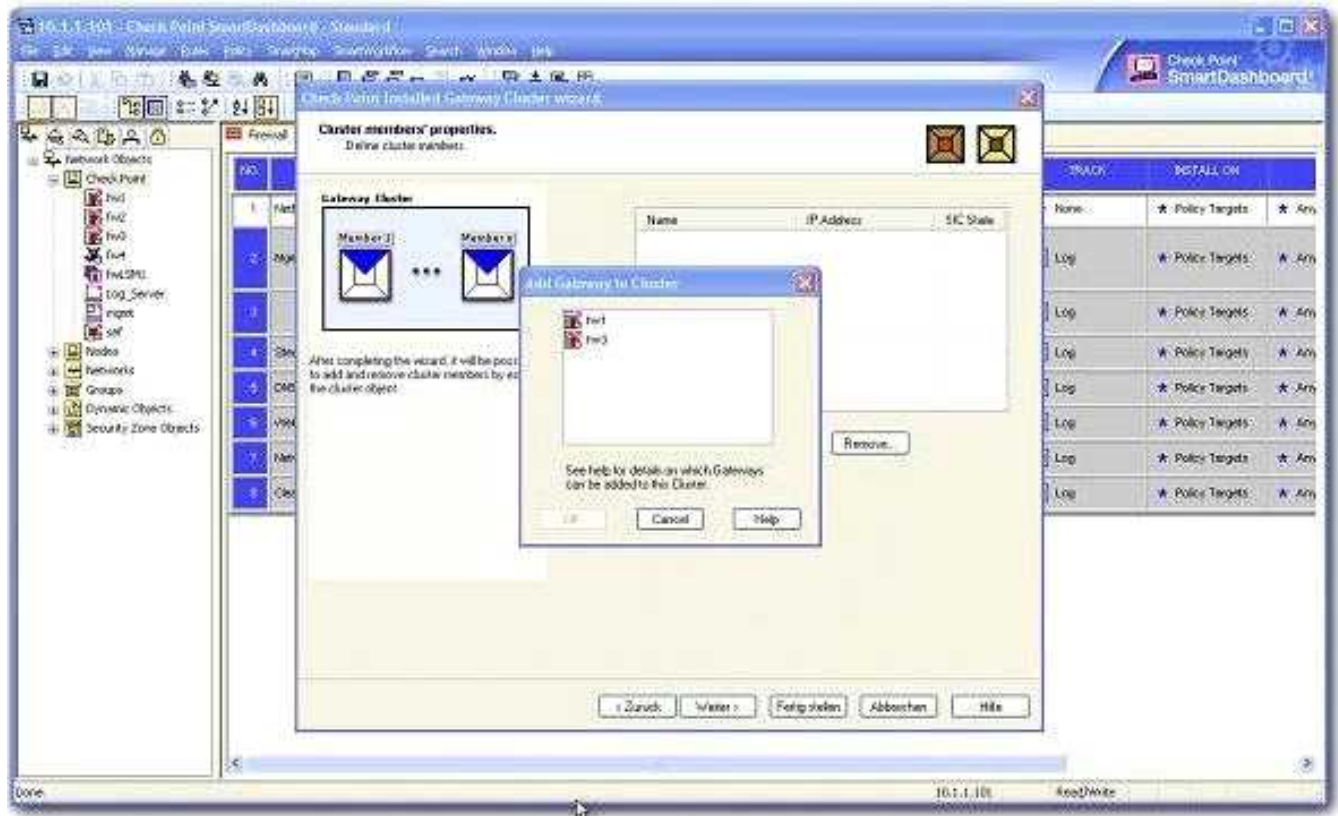
(LIMITED CONTENT)

Questions  
& Answers

# Version: 10.0

## Question: 1

You find that Gateway fw2 can NOT be added to the cluster object.



- (i) fw2 is a member in a VPN community.
- (ii) ClusterXL software blade is not enabled on fw2.
- (iii) fw2 is a DAIP Gateway.

What are possible reasons for that?

- 1) fw2 is a member in a VPN community.
- 2) ClusterXL software blade is not enabled on fw2.
- 3) fw2 is a DAIP Gateway.

- A. 2 or 3
- B. 1 or 2
- C. 1 or 3
- D. All

**Answer: C**

---

**Question: 2**

---

Which is the lowest Gateway version manageable by SmartCenter R77?

- A. R65
- B. S71
- C. R55
- D. R60A

---

**Answer: A**

---

---

**Question: 3**

---

A ClusterXL configuration is limited to \_\_\_\_\_ members.

- A. There is no limit.
- B. 16
- C. 8
- D. 2

---

**Answer: C**

---

---

**Question: 4**

---

CORRECT TEXT

Fill in the blank. The command that typically generates the firewall application, operating system, and hardware specific drivers is \_\_\_\_\_.

---

**Answer: snapshot**

---

---

**Question: 5**

---

When a packet is flowing through the security gateway, which one of the following is a valid inspection path?

- A. Acceleration Path
- B. Small Path
- C. Firewall Path
- D. Medium Path

---

**Answer: D**

---

---

**Question: 6**

---

If your firewall is performing a lot of IPS inspection and the CPUs assigned to fw\_worker\_thread are at or near 100%, which of the following could you do to improve performance?

- A. Add more RAM to the system.
- B. Add more Disk Drives.
- C. Assign more CPU cores to CoreXL
- D. Assign more CPU cores to SecureXL.

---

**Answer: C**

---

---

**Question: 7**

---

What is Check Point's CoreXL?

- A. A way to synchronize connections across cluster members
- B. TCP-18190
- C. Multiple core interfaces on the device to accelerate traffic
- D. Multi Core support for Firewall Inspection

---

**Answer: D**

---

---

**Question: 8**

---

The challenges to IT involve deployment, security, management, and what else?

- A. Assessments
- B. Maintenance
- C. Transparency
- D. Compliance

---

**Answer: D**

---

---

**Question: 9**

---

What is the offline CPSIZEME upload procedure?

- A. Find the cpsizeme\_of\_<gwname>.pdf, attach it to an e-mail and send it to cpsizeme\_upload@checkpoint.com
- B. Use the webbrowser version of cpsizeme and fax it to Check Point.
- C. Find the cpsizeme\_of\_<gwname>.xml, attach it to an e-mail and send it to cpsizeme\_upload@checkpoint.com
- D. There is no offline upload method.

---

**Answer: C**

---

---

**Question: 10**

---

How frequently does CPSIZEME run by default?

- A. weekly
- B. 12 hours
- C. 24 hours
- D. 1 hour

---

**Answer: C**

---

---

**Question: 11**

---

How do you run "CPSIZEME" on SPLAT?

- A. [expert@HostName]#>./cpsizeme -h
- B. [expert@HostName]# ./cpsizeme -R
- C. This is not possible on SPLAT
- D. [expert@HostName]# ./cpsizeme

---

**Answer: D**

---

---

**Question: 12**

---

How do you upload the results of "CPSIZEME" to Check Point when using a PROXY server with authentication?

- A. [expert@HostName]# ./cpsizeme.exe -a username:password@proxy\_address:port
- B. [expert@HostName]# ./cpsizeme -p username:password@proxy\_address:port
- C. [expert@HostName]# ./cpsizeme -a username:password@proxy\_address:port
- D. [expert@HostName]# ./cpsizeme.exe -p username:password@proxy\_address:port

---

**Answer: B**

---

---

**Question: 13**

---

Can the smallest appliance handle all Blades simultaneously?

- A. Depends on the number of protected clients and throughput.
- B. Depends on number of concurrent sessions.
- C. Firewall throughput is the only relevant factor.
- D. It depends on required SPU for customer environment.

---

**Answer: D**

---

---

**Question: 14**

---

Which statements about Management HA are correct?

- 1) Primary SmartCenter describes first installed SmartCenter

- 2) Active SmartCenter is always used to administrate with SmartConsole
- 3) Active SmartCenter describes first installed SmartCenter
- 4) Primary SmartCenter is always used to administrate with SmartConsole

- A. 1 and 4
- B. 2 and 3
- C. 1 and 2
- D. 3 and 4

---

**Answer: C**

---

---

**Question: 15**

---

Which of the following is NOT an advantage of SmartLog?

- A. SmartLog has a "Top Results" pane showing things like top sources, rules, and users.
- B. SmartLog displays query results across multiple log files, reducing the need to open previous files to view results.
- C. SmartLog requires less disk space by consolidating log entries into fewer records.
- D. SmartLog creates an index of log entries, increasing query speed.

---

**Answer: C**

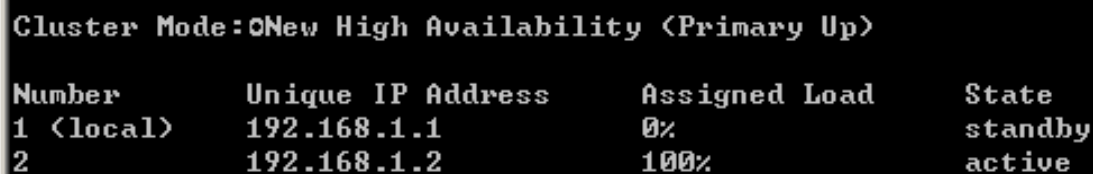
---

---

**Question: 16**

---

Exhibit:



```
Cluster Mode: New High Availability (Primary Up)

Number    Unique IP Address    Assigned Load    State
1 (local) 192.168.1.1          0%               standby
2         192.168.1.2          100%             active
```

From the following output of cphaprob state, which ClusterXL mode is this?

- A. Unicast mode
- B. Multicast mode
- C. New mode
- D. Legacy mode

---

**Answer: A**

---

---

**Question: 17**

---

Which of the following is NOT a feature of ClusterXL?

- A. Transparent upgrades
- B. Zero downtime for mission-critical environments with State Synchronization
- C. Enhanced throughput in all ClusterXL modes (2 gateway cluster compared with 1 gateway)
- D. Transparent failover in case of device failures

---

**Answer: C**

---

ClusterXL provides:

---

**Question: 18**

---

In which case is a Sticky Decision Function relevant?

- A. Load Balancing – Forward
- B. High Availability
- C. Load Sharing – Multicast
- D. Load Sharing – Unicast

---

**Answer: C**

---

---

**Question: 19**

---

What is NOT a valid LDAP use in Check Point SmartDirectory?

- A. Retrieve gateway CRL's
- B. Enforce user access to internal resources
- C. External users management
- D. Provide user authentication information for the Security Management Server

---

**Answer: B**

---

---

**Question: 20**

---

There are several SmartDirectory (LDAP) features that can be applied to further enhance SmartDirectory (LDAP) functionality, which of the following is NOT one of those features?

- A. Support many Domains under the same account unit
- B. Support multiple SmartDirectory (LDAP) servers on which many user databases are distributed
- C. High Availability, where user information can be duplicated across several servers
- D. Encrypted or non-encrypted SmartDirectory (LDAP) Connections usage

---

**Answer: A**

---

---

**Question: 21**

---

Choose the BEST sequence for configuring user management in SmartDashboard, using an LDAP server.

- A. Configure a server object for the LDAP Account Unit, and create an LDAP resource object.
- B. Configure a workstation object for the LDAP server, configure a server object for the LDAP Account Unit, and enable LDAP in Global Properties.
- C. Configure a server object for the LDAP Account Unit, enable LDAP in Global Properties, and create an LDAP resource object.
- D. Enable LDAP in Global Properties, configure a host-node object for the LDAP server, and configure a server object for the LDAP Account Unit.

---

**Answer: D**

---

---

**Question: 22**

---

The User Directory Software Blade is used to integrate which of the following with a R77 Security Gateway?

- A. UserAuthority server
- B. RADIUS server
- C. Account Management Client server
- D. LDAP server

---

**Answer: D**

---

---

**Question: 23**

---

Your users are defined in a Windows 2008 Active Directory server. You must add LDAP users to a Client Authentication rule. Which kind of user group do you need in the Client Authentication rule in R77?

- A. LDAP group
- B. All Users
- C. External-user group
- D. A group with a generic user

---

**Answer: A**

---

---

**Question: 24**

---

Which of the following commands do you run on the AD server to identify the DN name before configuring LDAP integration with the Security Gateway?

- A. dsquery user -name administrator
- B. query ldap -name administrator
- C. ldapquery -name administrator



D. cpquery -name administrator

---

**Answer: A**

---

---

**Question: 25**

---

In SmartDirectory, what is each LDAP server called?

- A. Account Server
- B. LDAP Unit
- C. Account Unit
- D. LDAP Server

---

**Answer: C**

---

---

**Question: 26**

---

When defining SmartDirectory for High Availability (HA), which of the following should you do?

- A. Configure Secure Internal Communications with each server and fetch branches from each.
- B. Replicate the same information on multiple Active Directory servers.
- C. Configure a SmartDirectory Cluster object.
- D. Configure the SmartDirectory as a single object using the LDAP cluster IP. Actual HA functionality is configured on the servers.

---

**Answer: B**

---

---

**Question: 27**

---

The set of rules that governs the types of objects in the directory and their associated attributes is called the:

- A. Schema
- B. SmartDatabase
- C. Access Control List
- D. LDAP Policy

---

**Answer: A**

---

---

**Question: 28**

---

When using SmartDashboard to manage existing users in SmartDirectory, when are the changes applied?

- A. At database synchronization
- B. Instantaneously

- C. Never, you cannot manage users through SmartDashboard
- D. At policy installation

---

**Answer: B**

---

---

**Question: 29**

---

Where multiple SmartDirectory servers exist in an organization, a query from one of the clients for user information is made to the servers based on a priority. By what category can this priority be defined?

- A. Location or Account Unit
- B. Gateway or Domain
- C. Gateway or Account Unit
- D. Location or Domain

---

**Answer: C**

---

---

**Question: 30**

---

Each entry in SmartDirectory has a unique \_\_\_\_\_.

- A. Container
- B. Distinguished Name
- C. Organizational Unit
- D. Schema

---

**Answer: B**

---

**Thank You for trying 156-315.77 PDF Demo**

To try our 156-315.77 practice exam software visit link below

<https://www.braindumpscollection.com/156-315.77.html>

## Start Your 156-315.77 Preparation

Use Coupon "20OFF" for extra 20% discount on the purchase of Practice Test Software. Test your 156-315.77 preparation with actual exam questions.