



BrainDumps  
Collection

# Cisco

## 300-175 Exam

Cisco Data Center Unified Computing Exam

Thank you for Downloading 300-175 exam PDF Demo

You can also try our 300-175 practice exam software

**Download Free Demo**

<https://www.braindumpscollection.com/300-175.html>

DEMO  
VERSION

(LIMITED CONTENT)

Questions  
& Answers

## Version: 20.0

---

### Question: 1

---

You make a change to a local disk policy of a service profile, and the server to which it was attached reboots without warning. Which action prevents this issue from occurring in other service profiles?

- A. Bind the service profile to a service profile template
- B. In the local disk, select the Protect Configuration check box
- C. In the service profile template, create a maintenance policy that uses the user-ack option
- D. In the service profile, set the soft shutdown timer to Never

---

**Answer: C**

---

Reference:

[https://www.cisco.com/c/en/us/td/docs/unified\\_computing/ucs/ucs-manager/GUI-User-Guides/Admin-Management/3-1/b\\_Cisco\\_UCS\\_Admin\\_Mgmt\\_Guide\\_3\\_1/b\\_Cisco\\_UCS\\_Admin\\_Mgmt\\_Guide\\_3\\_1\\_chapter\\_01011.html](https://www.cisco.com/c/en/us/td/docs/unified_computing/ucs/ucs-manager/GUI-User-Guides/Admin-Management/3-1/b_Cisco_UCS_Admin_Mgmt_Guide_3_1/b_Cisco_UCS_Admin_Mgmt_Guide_3_1_chapter_01011.html)

---

### Question: 2

---

On a Cisco Unified Computing System, which port type must the destination for an Ethernet traffic monitoring session be?

- A. unified uplink port
- B. Unconfigured Ethernet port
- C. Uplink Ethernet port
- D. Ethernet port-channel uplink port

---

**Answer: B**

---

Reference:

[https://www.cisco.com/c/en/us/td/docs/unified\\_computing/ucs/sw/gui/config/guide/2-0/b\\_UCSM\\_GUI\\_Configuration\\_Guide\\_2\\_0/b\\_UCSM\\_GUI\\_Configuration\\_Guide\\_2\\_0\\_chapter\\_0101001.html](https://www.cisco.com/c/en/us/td/docs/unified_computing/ucs/sw/gui/config/guide/2-0/b_UCSM_GUI_Configuration_Guide_2_0/b_UCSM_GUI_Configuration_Guide_2_0_chapter_0101001.html)

---

### Question: 3

---

Which two methods does Cisco UCS Manager use to create a fabric port channel? (Choose two.)

- A. by using the global chassis discovery policy settings
- B. by using the LAN connectivity policy settings during chassis discovery
- C. by using the SAN policy settings during chassis discovery

- D. by using the LAN connectivity policy settings for a specific interface after chassis discovery
- E. by using the chassis connectivity policy settings for a specific chassis after chassis discovery

---

**Answer: AE**

---

---

**Question: 4**

---

Refer to the exhibit.

```
Server # scope chassis
Server /chassis # scope adapter 2
Server /chassis/adapter # scope host-fc-if Cisco
Server /chassis/adapter/host-fc-if # create-boot-entry 20:00:00:11:11:11:11:11 1
Server /chassis/adapter/host-fc-if *# scope perbi
Server /chassis/adapter/host-fc-if/perbi *# set persistent-lun-binding enable
```

What is the result of committing the configuration?

- A. LUN ID associations are retained until the server reboots
- B. A new boot table entry takes effect immediately
- C. LUN ID associations are retained until they are removed manually
- D. The LUN ID is set to 2

---

**Answer: C**

---

---

**Question: 5**

---

Which two methods can you use to import and update a system configuration by using Cisco UCS Manager? (Choose two.)

- A. restore
- B. replace
- C. merge
- D. truncate
- E. purge

---

**Answer: BC**

---

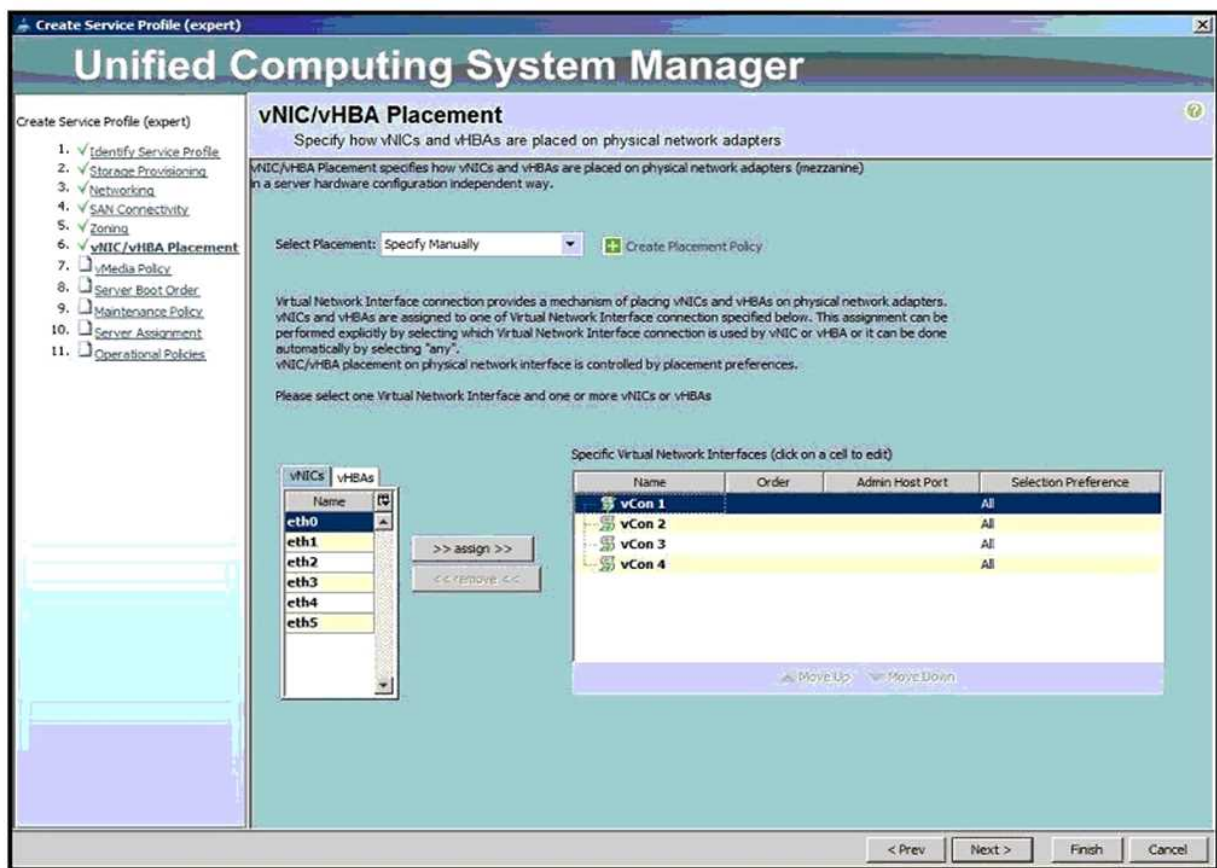
Reference:

[https://www.cisco.com/en/US/docs/unified\\_computing/ucs/sw/gui/config/guide/141/UCSM\\_GUI\\_Configuration\\_Guide\\_141\\_chapter43.html](https://www.cisco.com/en/US/docs/unified_computing/ucs/sw/gui/config/guide/141/UCSM_GUI_Configuration_Guide_141_chapter43.html)

---

**Question: 6**

---



Refer to the exhibit. Which action do you take to ensure that a vNIC is assigned to a specific adapter?

- A. automatically place the vNIC onto a physical adapter
- B. manually assign each vCon to a physical adapter
- C. order the vNICs numerically
- D. manually assign the vNIC to a vCon

---

**Answer: D**

---

### Question: 7

Which statement about how Cisco UCS Manager provides two-factor authentication is true?

- A. Cisco UCS Manager generates one-time tokens for users during the login process
- B. The AAA server validates the password and token
- C. The AAA server validates the password and a token server validates the token
- D. The server generates one-time tokens for users during the login process

---

**Answer: B**

---

Reference:

[https://www.cisco.com/c/en/us/td/docs/unified\\_computing/ucs/ucs-manager/GUI-User-Guides/](https://www.cisco.com/c/en/us/td/docs/unified_computing/ucs/ucs-manager/GUI-User-Guides/)

Admin-Management/3-1/b\_Cisco\_UCS\_Admin\_Mgmt\_Guide\_3\_1/  
b\_Cisco\_UCS\_Admin\_Mgmt\_Guide\_3\_1\_chapter\_0100.pdf

---

**Question: 8**

---

Which two descriptions of user locales in a Cisco UCS domain are true? (Choose two.)

- A. A user assigned to a locale can manage an organization hierarchically within the locale
- B. A locale is the same as an organization
- C. A UCS user can be assigned to only one locale
- D. A locale defines a default language and time zone in UCS Manager
- E. A locale can contain more than one organization

---

**Answer: AE**

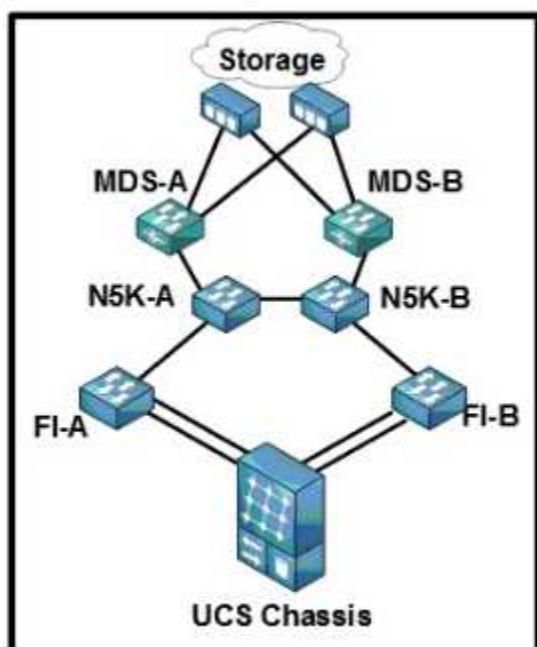
---

---

**Question: 9**

---

Refer to the exhibit.



You are implementing Fibre Channel smart zoning, and you need to prevent RSCN events. Which two configurations use the hardware resources efficiently? (Choose two.)

- A. a Cisco UCS Fibre Interconnect that uses Fibre Channel switch mode
- B. the NPIV feature enabled upstream
- C. the NPV feature enabled upstream
- D. a Cisco UCS Fibre Interconnect that uses end-host mode
- E. storage that is directly attached to the Cisco UCS Fabric Interconnect

---

**Answer: AB**

---

---

**Question: 10**

---

Refer to the exhibit.

```
interface ethernet 1/30
  switchport mode trunk
  switchport trunk allowed vlan 2002

int vfc 130
  switchport mode F
  switchport trunk allowed vsan 2002
  bind interface eth 1/30
  no shutdown

vsan database
  vsan 2002 interface vfc 130
```

Which type of device can be connected to the interface?

- A. a Cisco Nexus 9000 Series switch
- B. a native Fibre Channel switch
- C. a storage controller
- D. a Cisco Nexus 3000 Series switch

---

**Answer: B**

---

---

**Question: 11**

---

When you use a SAN boot, which option do you configure?

- A. an iSCSI boot profile
- B. a CIMC secure boot policy
- C. a boot target LUN on the device that stores the operating system image
- D. a UEFI boot target on the device that stores the operating system image

---

**Answer: C**

---

---

**Question: 12**

---

Refer to the exhibit.

```
adapter 1/1/1 (mcp):1# iscsi_get_config

vnic iSCSI Configuration:
-----
vnic_id: 5
    link_state: Up

    Initiator Cfg:
    initiator_state: ISCSI_INITIATOR_READY
initiator_error_code: ISCSI_BOOT_NIC_NO_ERROR
    vlan: 0
    dhcp status: false
        IQN: iqn.2013-01.com.myserver124
        IP Addr: 15.16.180.2
        Subnet Mask: 255.255.255.0
        Gateway: 15.16.180.254

    Target Cfg:
    Target Idx: 0
        State: INVALID
    Prev State: ISCSI_TARGET_GET_LUN_INFO
    Target Error: ISCSI_TARGET_GET_HBT_ERROR
        IQN: iqn.1992-08.com.netapp:sn.1111111
        IP Addr: 14.17.10.13
        Port: 3260
    Boot Lun: 0
    Ping Stats: Success (9.990ms)
```

The iSCSI boot LUN is inaccessible. To troubleshoot the issue, which action must you take?

- A. Check the zoning information on the switches
- B. Check the host registration on the storage controller
- C. Confirm that you are using the correct default gateway
- D. Ensure that the correct VLAN is configured on the iSCSI adapter

---

**Answer: D**

---

---

### Question: 13

---

You need to add additional DNS entries to UCS Manager. Where would you configure the addition DNS server information?

- A. Service Profile template
- B. Equipment tab
- C. Admin tab
- D. LAN tab

---

**Answer: C**

---

---

**Question: 14**

---

Refer to the exhibit.

```
cisco# scope cimc
cisco /cimc # scope network
cisco /cimc/network # set mode dedicated
cisco /cimc/network *# commit
cisco /cimc/network #
```

Which port is used for communication between the server and the Cisco Integrated Management Controller?

- A. fabric uplink port
- B. LAN on the motherboard port
- C. management Ethernet port
- D. ports on the adapter card

---

**Answer: A**

---

---

**Question: 15**

---

Refer to the exhibit.

```
CISCO # scope org /
CISCO /org* # scope boot-policy cisco_1
CISCO /org/boot-policy # create san
CISCO /org/boot-policy/san* # set order 1
CISCO /org/boot-policy/san* # create san-image primary
CISCO /org/boot-policy/san/san-image* # set vhma vHBA2
CISCO /org/boot-policy/san/san-image* # create path secondary
CISCO /org/boot-policy/san/san-image/path* # set lun 5
```

Which result of running the command is true?

- A. vHBA2 must be associated to a vNIC
- B. vHBA2 is the secondary boot device
- C. The server attempts to boot by using vHBA2
- D. The server boots from a local disk before booting from the SAN

---

**Answer: C**

---



---

**Question: 16**

---

You must generate python scripts for operations performed from Cisco UCS Manager. Which API must you use?

- A. ConvertTo-UcsCmdlet -Python
- B. WatchUcsEvent
- C. ExportUcsSession
- D. GetManagedObject

---

**Answer: A**

---

---

**Question: 17**

---

An SD card on a Cisco UCS C220 M4 Rack Server is in a degraded RAID state. To resolve the issue, which type of policy do you create in the associated service profile?

- A. A FlexFlash scrub
- B. a BIOS settings scrub
- C. a disk scrub
- D. a local disk configuration that uses RAID 1 mirrored mode

---

**Answer: A**

---

---

**Question: 18**

---

Which option must you use to regenerate the default keyring certificate for Cisco UCS Manager?

- A. OpenSSL server
- B. UCS Manager CLI
- C. UCS Manager GUI
- D. certificate authority

---

**Answer: B**

---

---

**Question: 19**

---

Refer to the exhibit.

```
CISCO# scope org /
CISCO /org* # create service-profile ServTemp2 updating-template
CISCO /org/service-profile* # set bios-policy bios_1
CISCO /org/service-profile* # set boot-policy boot_1
CISCO /org/service-profile* # set dynamic-vnic-conn-policy d_vic_1
CISCO /org/service-profile* # set ext-mgmt-ip-state pooled
CISCO /org/service-profile* # set host-fw-policy fw_1
CISCO /org/service-profile* # set identity dynamic-uuid derived
CISCO /org/service-profile* # set ipmi-access-profile ipmi_1
CISCO /org/service-profile* # set local-disk-policy l_disk_1
CISCO /org/service-profile* # set maint-policy maint_1
CISCO /org/service-profile* # set mgmt-fw-policy fw_mgmt_1
CISCO /org/service-profile* # set power-control-policy Power_1
CISCO /org/service-profile* # set scrub-policy scrub_1
CISCO /org/service-profile* # set sol-policy sol_1
CISCO /org/service-profile* # set stats-policy stats_1
CISCO /org/service-profile* # vcon-policy vcon_1
CISCO /org/service-profile* # commit-buffer
CISCO /org/service-profile #
```

Which description of the configuration is true?

- A. Each service profile created by using the template must be modified individually
- B. Changes made to the template propagate automatically to the service profiles created by using the template
- C. Changes made the UUID suffix pool assigned to the template change the UUID assigned to the service profiles created by using the template
- D. Changes made to the MAC address pool assigned to the template change the MAC addresses assigned to the service profiles created by using the template

---

**Answer: B**

---

Reference:

[https://www.cisco.com/en/US/docs/unified\\_computing/ucs/sw/gui/config/guide/141/UCSM\\_GUI\\_Configuration\\_Guide\\_141\\_chapter28.html](https://www.cisco.com/en/US/docs/unified_computing/ucs/sw/gui/config/guide/141/UCSM_GUI_Configuration_Guide_141_chapter28.html)

**Thank You for trying 300-175 PDF Demo**

To try our 300-175 practice exam software visit link below

<https://www.braindumpscollection.com/300-175.html>

## Start Your 300-175 Preparation

Use Coupon "20OFF" for extra 20% discount on the purchase of Practice Test Software. Test your 300-175 preparation with actual exam questions.