



BrainDumps
Collection

Cisco

400-151 Exam

Cisco CCIE Data Center Exam

Thank you for Downloading 400-151 exam PDF Demo

You can also try our 400-151 practice exam software

Download Free Demo

<https://www.braindumpscollection.com/400-151.html>

DEMO
VERSION

(LIMITED CONTENT)

Questions
& Answers

Version: 24.0

Question: 1

Refer to the exhibit.

admin@optic11> show policy -c fv.AEPg -f fv.AEPg.name== Clients				admin@optic11> show policy -c fv.AEPg -f fv.AEPg.name== Server				
Total Objects shown: 1				Total Objects shown: 1				
# fv.AEPg				# fv.AEPg				
name : Clients				name : Server				
childAction :				childAction :				
configIssues :				configIssues :				
configSt : applied				configSt : applied				
descr :				descr :				
dn : uni/tn-Pod1/ap-VMM/epg-Clients				dn : uni/tn-Pod1/ap-VMM/epg-Server				
isAttrBasedEpg : no				isAttrBasedEpg : no				
lcOwn : local				lcOwn : local				
matchT : AtleastOne				matchT : AtleastOne				
modTs : 2015-09-30T12:08:43.063+11:00				modTs : 2015-09-30T12:08:43.063+11:00				
monPolDn : uni/tn-common/nonepg-default				monPolDn : uni/tn-common/nonepg-default				
pcTag : 32770				pcTag : 49154				
prio : unspecified				prio : unspecified				
rn : epg-Clients				rn : epg-Server				
scope : 2392065				scope : 2392065				
status :				status :				
triggerSt : triggerable				triggerSt : triggerable				
txId : 0				txId : 0				
uid : 15374				uid : 15374				
Leaf101# show zoning-rule scope 2392065								
Rule ID		SrcEPG	DstEPG	FilterID	operSt	Scope	Action	Priority
4225	0	0		implarp	enabled	2392065	permit	any_any_filter(13)
4226	0	0		implicit	enabled	2392065	deny,log	any_any_any(14)
4227	0	49153		implicit	enabled	2392065	permit	any_dest_any(12)
Leaf101#								

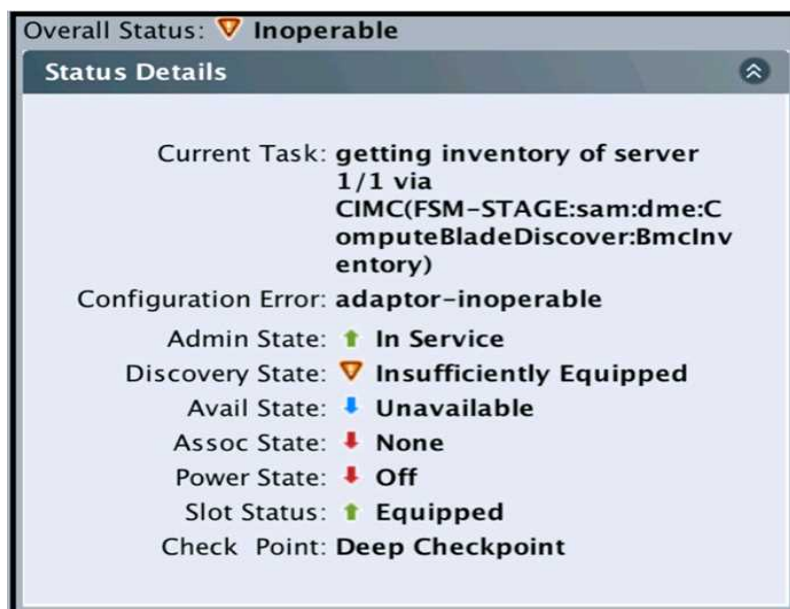
A virtual machine in the EPG "Clients" is unable to communicate via ICMP with a virtual machine in the EPG "Server". Which option is the most likely cause of this issues?

- A. The EPG "Server" is providing the relevant contract but the EPG "Clients" is not consuming the contract
- B. Not enough detail is provided in the output to determine the exact cause
- C. There is no issue because the configured rules permit ICMP traffic
- D. No contract is configured between the two EPGs

Answer: D

Question: 2

Refer to the exhibit.



After you upgrade Cisco UCS firmware, some of your blades have these error messages. Which description of the problem is true?

- A. Storage provisioning is not configured.
- B. Some components are deprecated.
- C. vNIC template must be converted to updating.
- D. Service profile requires a connectivity policy.

Answer: D

Question: 3

Refer to the exhibit.

```
https://{hostname}/api/node/class/infraWiNode.json?query-target-
filter=wcard(infraWiNode.dn , "topology/pod-1/node-1/av"
```

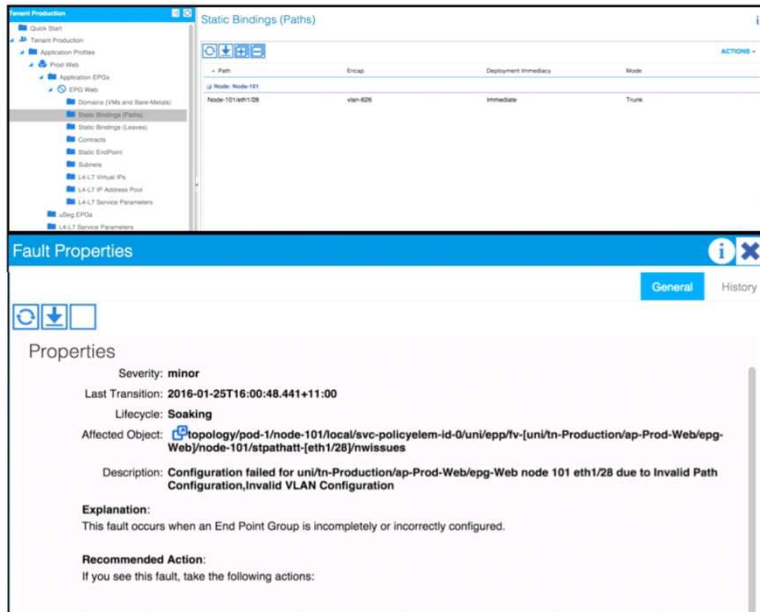
Using GET method with this XML code, which two pieces of information about Application Policy Infrastructure Controllers shows the output? (Choose two)

- A. ports of the leaves where the APICs are connected
- B. hard disks status for each APIC in the cluster
- C. APIC version installed on each node
- D. serial number of each APIC in the cluster
- E. admin status of each APIC in the cluster
- F. number of network interfaces of each APIC

Answer: A, F

Question: 4

Refer to the exhibit.



An admin has created a new EPG in an ACI fabric. The admin then specified static path binding as shown in exhibit. After submitting this policy configuration, the admin noticed that this newly created EPG had the fault shown in the exhibit. Which option is the likely explanation of this fault?

- A. There is no fault. The fault is currently in the soaking state and the fault will automatically clear and everything will work as expected
- B. The encap VLAN configured is interface for configuration management not within the allowed range of VLANs as specified by the associated domain
- C. There is not enough information to determine the cause of the problem
- D. The admin incorrectly configured this static path as a "trunk" when it should have been configured as an access (untagged) port

Answer: B

Question: 5

DRAG DROP

Drag and drops the feature from the left onto the correct description on the right

Bridge assurance	It helps prevent bridging loops that could occur because of a unidirectional link failure on a point-to-point link.
BPDU guard	It suppresses sending and receiving BPDUs on the port.
BPDU filter	It prevents a port from becoming root port or blocked port. If a port configured for root guard receives a superior BPDU, the port immediately goes to the root-inconsistent (blocked) state.
Loop guard	It shuts down the port if that port receives a BPDU.
Root guard	When running PVST+ or MST, and configure a port as a network port, BPDUs are sent and it moves a port into the blocking state if it no longer receives BPDUs.

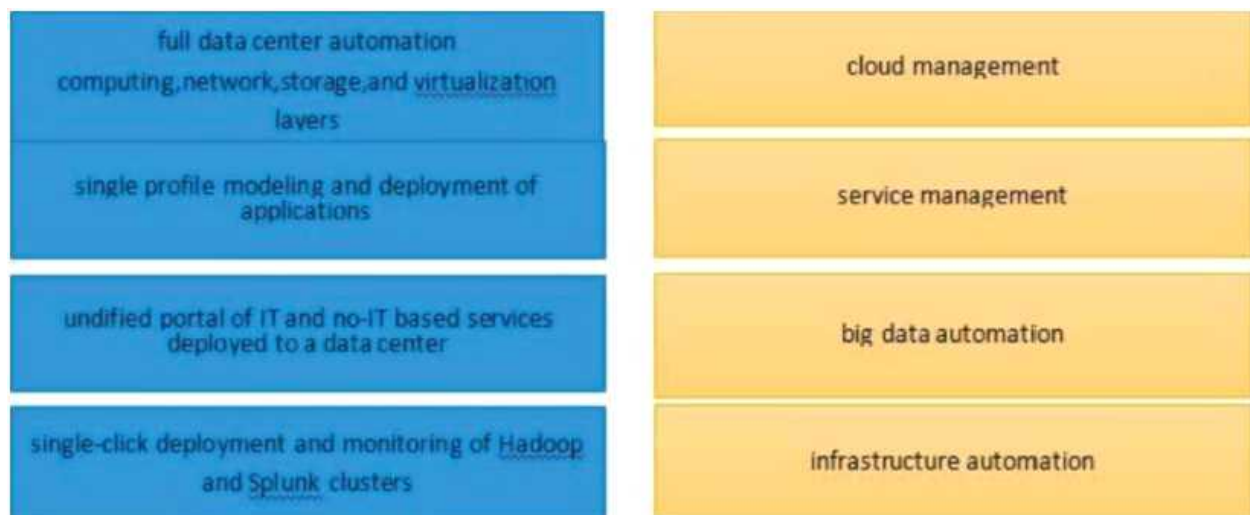
Answer:

Loop guard
BPDU filter
Root guard
BPDU guard
Bridge assurance

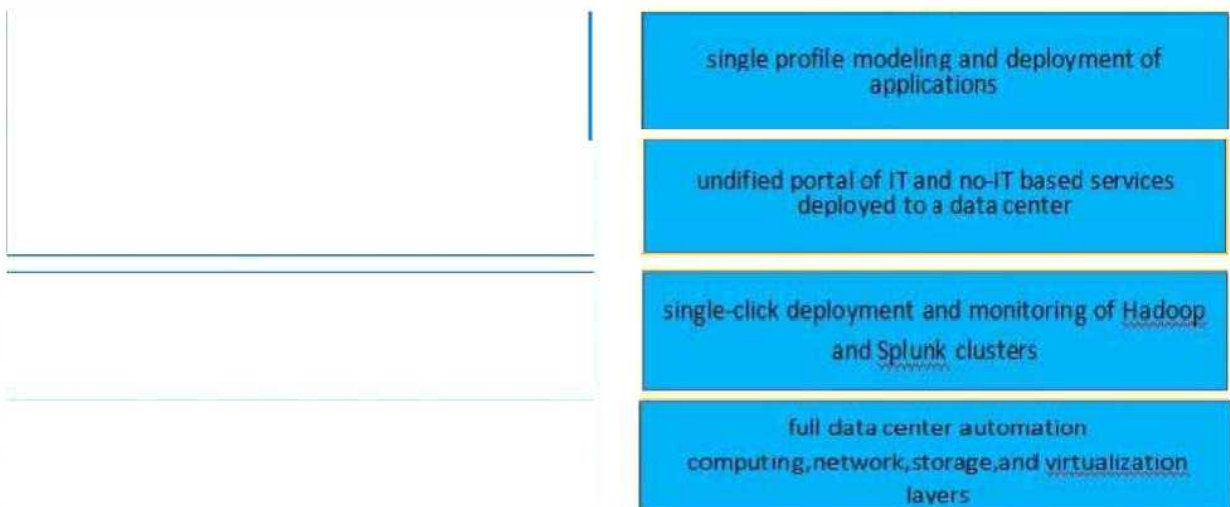
Question: 6

DRAG DROP

Drag and drop the enlisted four offers from the left onto the correct Cisco ONE Enterprise Cloud Suite on the right.

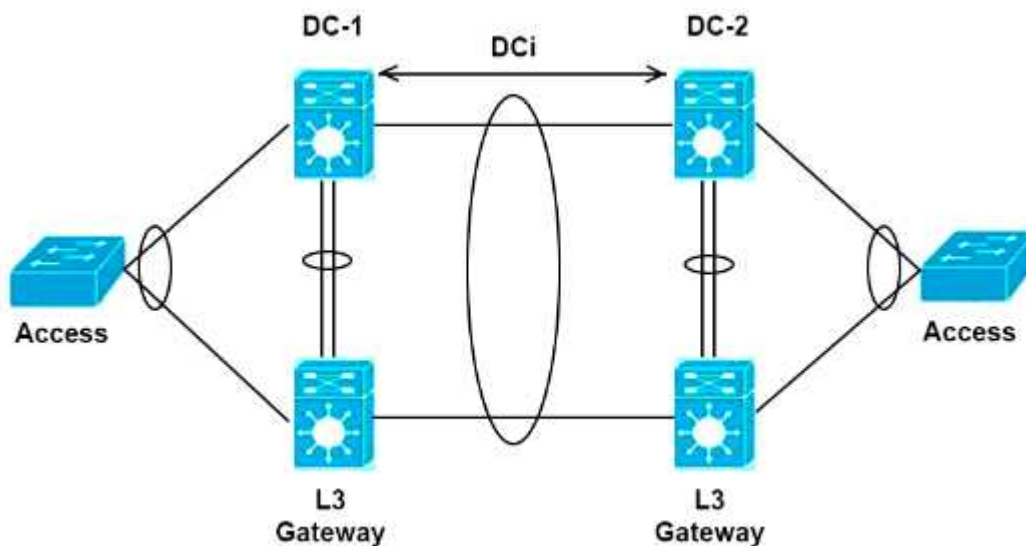


Answer:



Question: 7

Refer to the exhibit.



Which two options must be configured on the Layer 3 Gateway switches to isolate the HSRP between the two data centers? (Choose two)

- A. disable HSRP GARP on the SVIs for the VLANs that move across the DCI
- B. routed access control list on the DCI on the SVIs that blocks the HSRP control traffic
- C. port access control list on the DCI port-channel that blocks the HSRP control traffic
- D. VLAN access control list that blocks the HSRP control traffic
- E. ARP inspection filter that blocks the HSRP GARPs

Answer: D, E

Explanation:

<https://www.cisco.com/c/en/us/support/docs/switches/nexus-7000-series-switches/118934-configure-nx7k-00.html#anc12>

Question: 8

Which three of the following are key components to provide network connectivity to an IoT Solution? (Choose three)

- A. Voice
- B. Service Provider
- C. Wireless
- D. Routing
- E. Firewalling
- F. Switching

Answer: BCE

Question: 9

An IoT Solution is more likely to generate a lot of analytics and data

a. Which of the following enables this information to be analysed and managed through integration with 3rd party devices and applications?

- A. ASR
- B. API
- C. Prime Infrastructure
- D. IP67

Answer: C

Question: 10

DRAG DROP

Drag and drop the Cisco UCS Director REST URI on the left to their correct HTTP method on the right.

app/api/rest?opName=userAPIGetGroups	POST
app/api/rest?opName=userAPIUpdateGroup	GET
app/api/rest?opName=userAPICreateGroup	DELETE
app/api/rest?opName=userAPIDeleteGroup	PUT

Answer:

app/api/rest?opName=userAPICreateGroup
app/api/rest?opName=userAPIGetGroups
app/api/rest?opName=userAPIDeleteGroup
app/api/rest?opName=userAPIUpdateGroup

Thank You for trying 400-151 PDF Demo

To try our 400-151 practice exam software visit link below

<https://www.braindumpscollection.com/400-151.html>

Start Your 400-151 Preparation

Use Coupon "20OFF" for extra 20% discount on the purchase of Practice Test Software. Test your 400-151 preparation with actual exam questions.