



BrainDumps  
Collection

# Avaya

## 72200X Exam

Avaya Aura Core Components Support

Thank you for Downloading 72200X exam PDF Demo

You can also try our 72200X practice exam software

**Download Free Demo**

<https://www.braindumpscollection.com/72200X.html>

DEMO  
VERSION

(LIMITED CONTENT)

Questions  
& Answers



---

**Answer: B,C**

---

---

**Question: 2**

---

What statement about the H.323 to SIP routing is true?

- A. Avaya Aura® Communication Manager does feature processing for both endpoints.
- B. Avaya Aura® Communication Manager does feature processing for H.323 endpoint only.
- C. Avaya Aura® Communication Manager does feature processing for SIP endpoint only.
- D. Avaya Aura® Communication Manager does not do feature processing for any endpoint in this scenario.

---

**Answer: A**

---

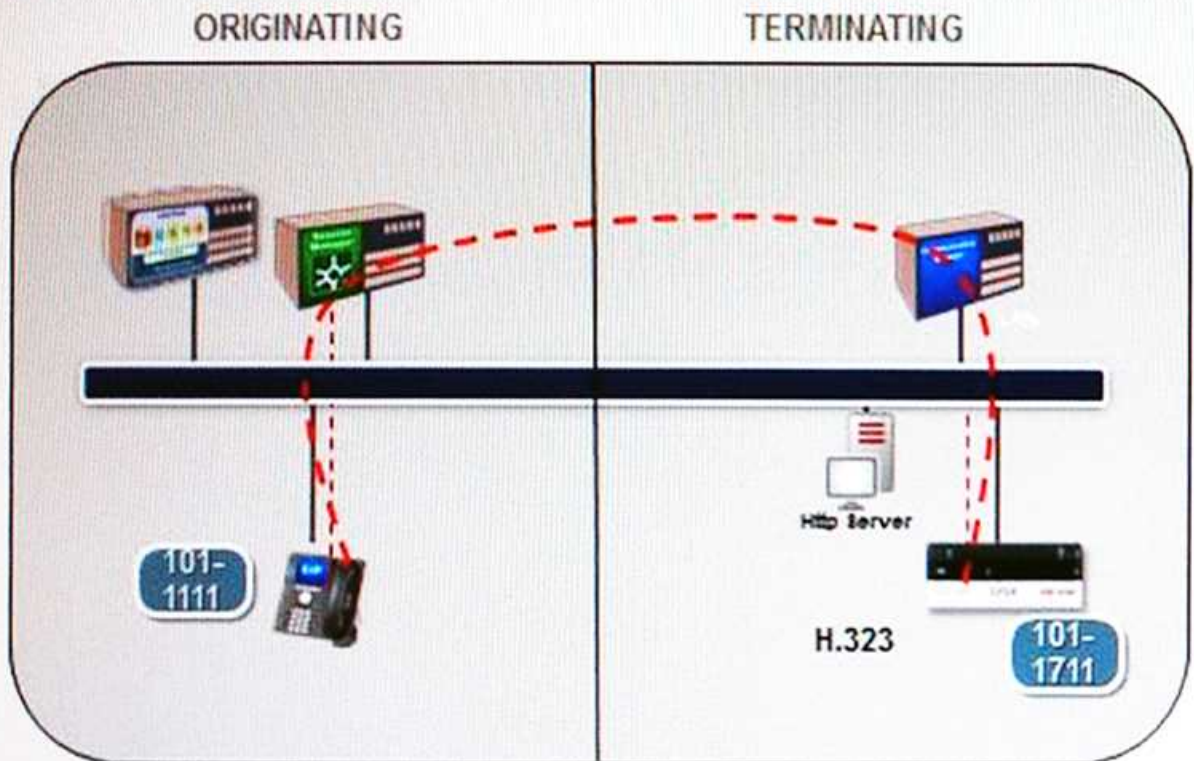
---

**Question: 3**

---

Refer to the Exhibit.

## Call Flow for SIP to H.323 Routing



A SIP user is calling an H.323 user.

In this call flow, in which phase does Avaya Aura® Communication Manager (CM) handle the call processing for each endpoint?

- A. both endpoints in the originating phase
- B. H.323 endpoint in originating phase, SIP endpoint in terminating phase
- C. SIP endpoint on originating phase, H.323 endpoint in terminating phase
- D. both endpoints in the terminating phase

---

**Answer: C**

---

---

### Question: 4

---

When retrieving a message from Avaya Aura® Messenger (AAM), what is the function of the RE-INVITE?

- A. The RE-INVITE is only used when the initial INVITE is not transmitted successfully.

- B. The RE-INVITE shuffles the media path off Avaya Aura® Communication Manager (CM).
- C. The RE-INVITE is to allow the user to be authenticated.
- D. The RE-INVITE is only sent if a voice port cannot be initially connected to the caller.

---

**Answer: C**

---

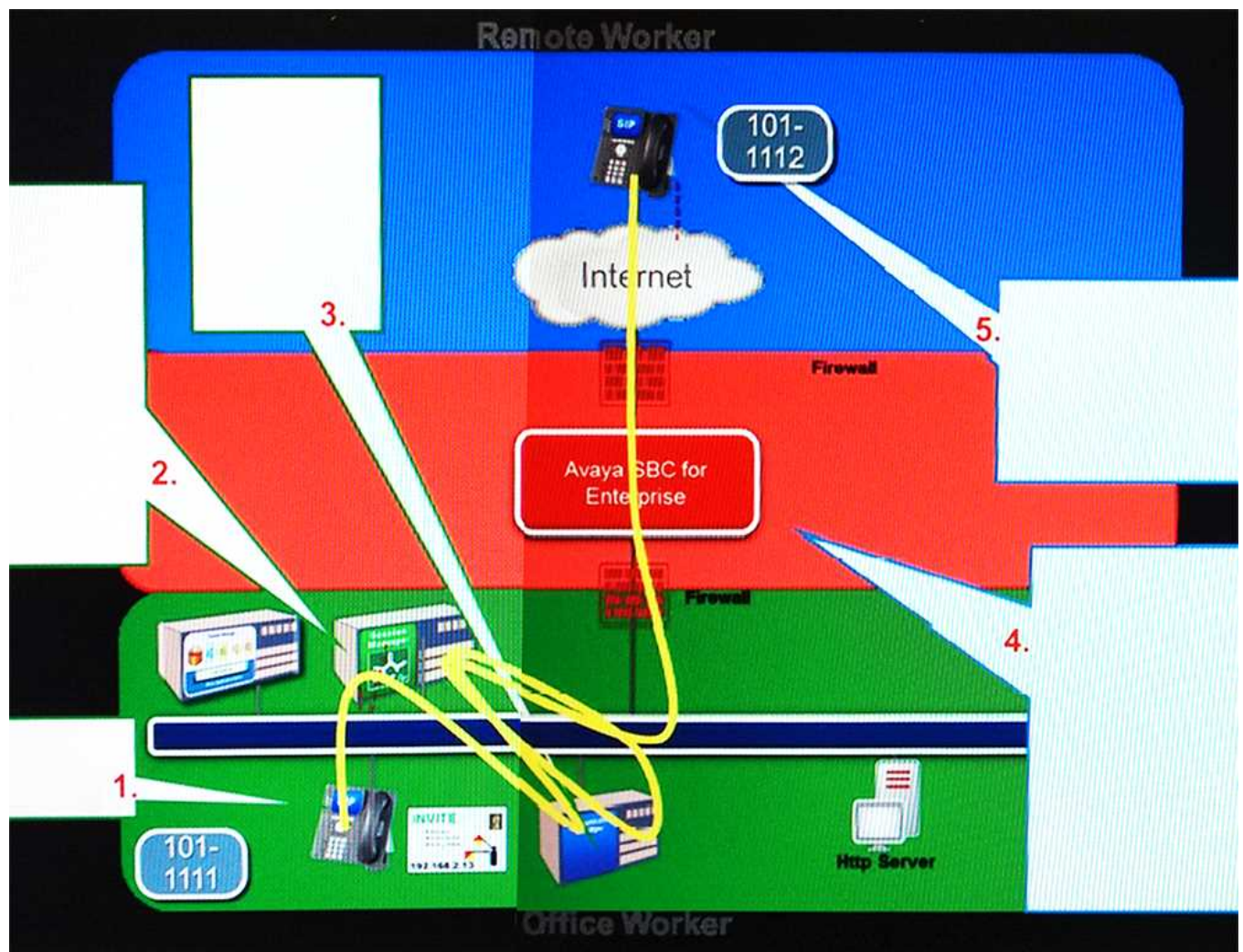


---

**Question: 5**

---

Refer to the Exhibit.



Which two statements about a call from AST 1011111 to Remote Worker AST 1011112 are true? (Choose two.)

- A. Avaya Session Border Controller for Enterprise (SBCE) periodically sends SIP Options to 1011112 looking for a 200 ok response to check it is reachable.
- B. SIP Signaling traverses the Avaya Session Border Controller for Enterprise (SBCE) and the Media must bypass the SBCE.
- C. As far as Avaya Aura® Session Manager (SM) is concerned, all Remote Worker phones are

registering from an IP address equal to the Avaya Session Border Controller for Enterprise (SBCE) Remote Worker Private IP address.

D. Avaya Session Border Controller for Enterprise (SBCE) needs to be built as a trusted SIP Entity and Entity link for remote workers.

E. The configuration of a Remote Worker AST is the same as an Office Worker AST in the Avaya Aura® System Manager (SMGR) user profiles.

---

**Answer: C,E**

---

**Thank You for trying 72200X PDF Demo**

To try our 72200X practice exam software visit link below

<https://www.braindumpscollection.com/72200X.html>

## Start Your 72200X Preparation

Use Coupon "20OFF" for extra 20% discount on the purchase of Practice Test Software. Test your 72200X preparation with actual exam questions.