



**BrainDumps  
Collection**

# SAP

## C\_THR85\_2311 Exam

**SAP Certified Application Associate - SAP SuccessFactors  
Succession Management 2H/2023**

Thank you for Downloading C\_THR85\_2311 exam PDF Demo

You can also try our C\_THR85\_2311 practice exam software

**Download Free Demo**

[https://www.braindumpscollection.com/C\\_THR85\\_2311.html](https://www.braindumpscollection.com/C_THR85_2311.html)

**DEMO  
VERSION**

(LIMITED CONTENT)

**Questions  
& Answers**

# Version: 4.0

---

**Question: 1**

---

What must you do to allow a user to view the Nominate button for Talent Search V2?Note: There are 2 correct answers to this question.

- A. Select the checkbox next to the candidate's name after performing a search.
- B. Change the criteria filters when viewing search results.
- C. Modify the Talent Search section of the Succession Data Model.
- D. Grant a user the appropriate permissions to nominate successors.

---

**Answer: A D**

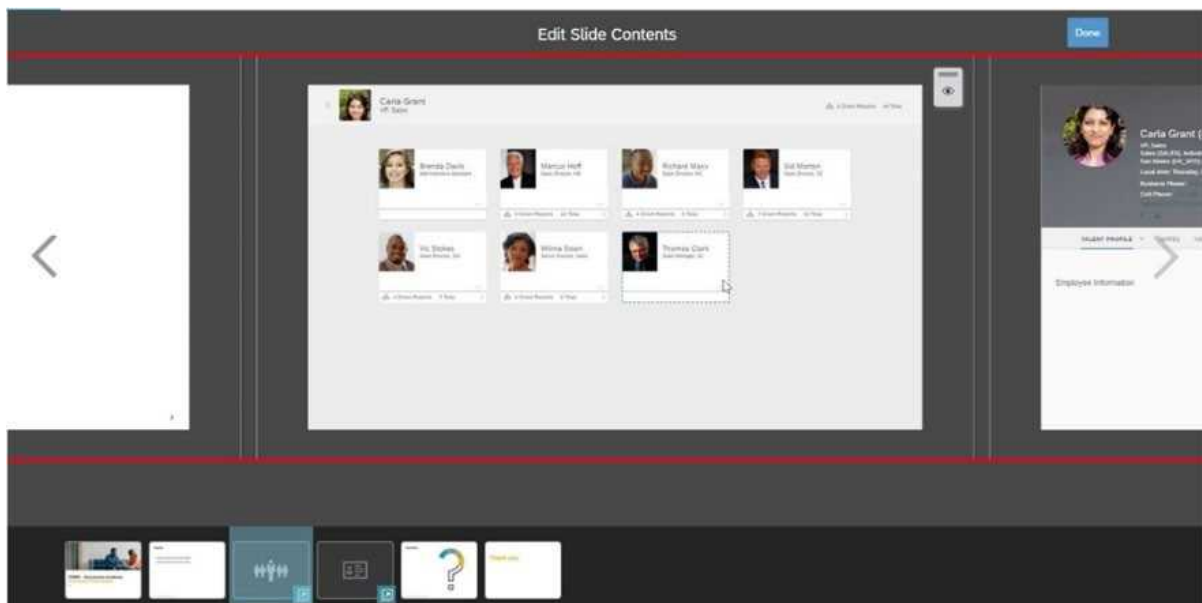
---

---

**Question: 2**

---

What can a user accomplish using the eye icon on the screen shown here?



Note: There are 2 correct answers to this question.

- A. Show or hide the slide.
- B. Show or hide hotspots.
- C. Show or hide all direct reports.
- D. Show or hide one or more direct reports.

---

**Answer: C D**

---

---

### Question: 3

---

Using the Legacy Position-Based Nomination Method, where can fields be added for the Position dialog?

- A. From the Succession Data Model XML

- B. From Configure Object Definition
- C. From the Succession Org Chart XML
- D. From Employee Files

---

**Answer: C**

---

---

**Question: 4**

---

Which of the following features are available when you import background data using the Import Extended User Information feature?Note: There are 2 correct answers to this question.

- A. The data can include many to one data.
- B. The data can include a date field.
- C. The data CANNOT include a user ID.
- D. The import file includes multiple sections of data.

---

**Answer: B D**

---

---

**Question: 5**

---

What information can be included in a Trend Data Export file?Note: There are 3 correct answers to this question.

- A. Live profile data
- B. Talent flags
- C. Labels
- D. Calibration session data
- E. Performance form data

---

**Answer: A D E**

---

**Thank You for trying C\_THR85\_2311 PDF Demo**

To try our C\_THR85\_2311 practice exam software visit link below

[https://www.braindumpscollection.com/C\\_THR85\\_2311.html](https://www.braindumpscollection.com/C_THR85_2311.html)

## Start Your C\_THR85\_2311 Preparation

Use Coupon "20OFF" for extra 20% discount on the purchase of Practice Test Software. Test your C\_THR85\_2311 preparation with actual exam questions.