



BrainDumps
Collection

Red Hat

EX318 Exam

Red Hat Certified Specialist in Virtualization

Thank you for Downloading EX318 exam PDF Demo

You can also try our EX318 practice exam software

Download Free Demo

<https://www.braindumpscollection.com/EX318.html>

DEMO
VERSION

(LIMITED CONTENT)

Questions
& Answers

Version: 4.0

Question: 1

Task 1

Install RHVM

Answer: See the steps below for Solution.

Explanation:

```
curl http://materials.example.com/rhvm.repo -o /etc/yum.repos.d/rhvm.repo
yum install -y rhvm
engine-setup
systemctl status ovirt-engine firefox
https://rhvm.lab.example.com
```

Question: 2

Task 2

Use nfs to create and export ISO, Data, and Export storage domains with utility

Answer: See the steps below for Solution.

Explanation:

```
vi /etc/exports
/exports/data *(rw)
/exports/iso *(rw)
/exports/export *(rw)
exportfs -rv chown
36:36 /mnt/*
```

Question: 3

Task 3

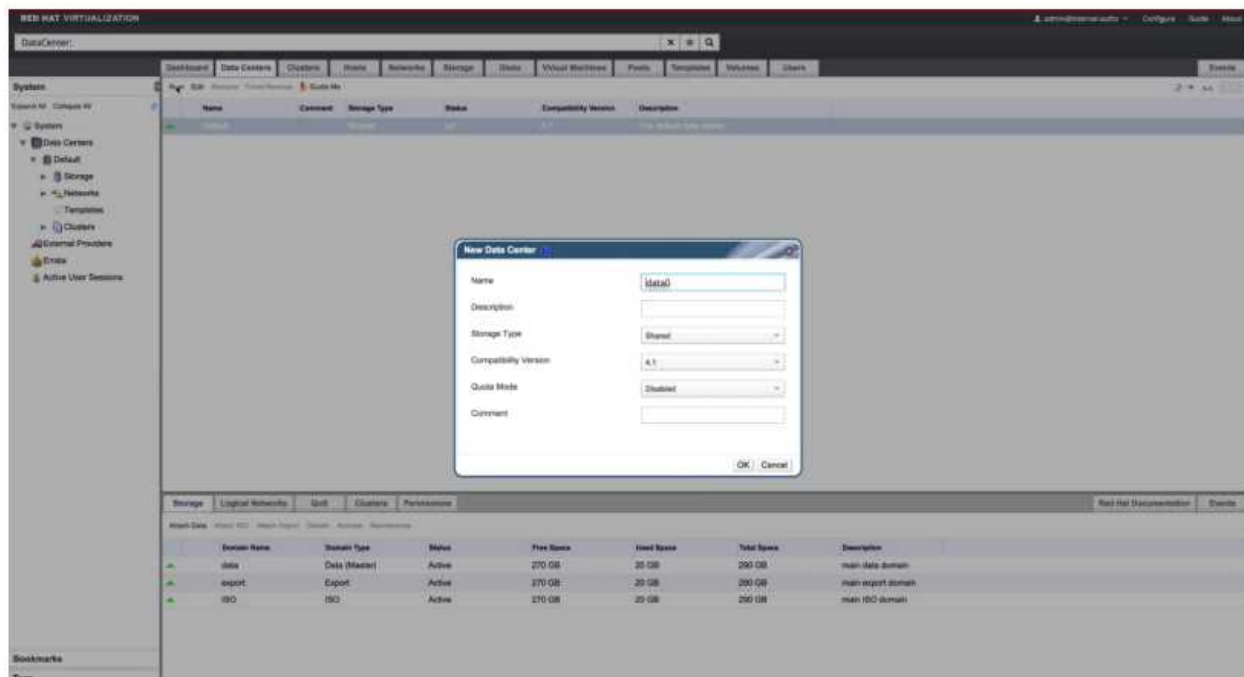
Create a data center named "data0" with shared storage

Create a cluster named "cluster0" with a CPU architecture of x86_64 and a CPU type of xxx

Answer: See the steps below for Solution.

Explanation:

System -> Data Centers -> New
Name: data0



Data Center - Guide Me

There are still unconfigured entities:

- Configure Cluster**
- Configure Host**
- Configure Storage**
- Attach Storage**

Optional actions:

- + **Configure ISO Library**
- + **Attach ISO Library**

Configure Later

New Cluster

General

Optimization

Migration Policy

Scheduling Policy

Console

Fencing Policy

MAC Address Pool

Data Center: data0

Name: cluster0

Description:

Comment:

Management Network: ovirtmgmt

CPU Architecture: x86-64

CPU Type: Dual Core

Compatibility Version: 4.1

Switch type: Linux Bridge

☒ Enable Virt Service

☐ Enable Gluster Service

☐ Enable to set VM maintenance reason

OK **Cancel**

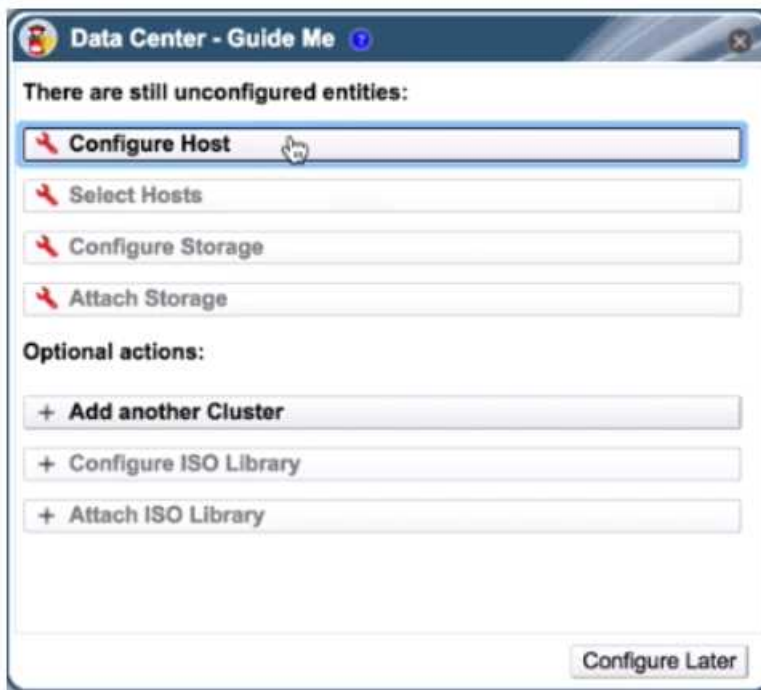
Question: 4

Task 4

Add RHVH hosts “servera.lab.example.com” and “serverc.lab.example.com” into cluster “cluster0”

Answer: See the steps below for Solution.

Explanation:
Steps in Exhibits below



New Host

General

Host Cluster: cluster0
Data Center: data0

☐ Use Foreman/Satellite

Name: servera.lab.example.com
Comment:
Address:
SSH Port: 22

Authentication
User Name: root
☒ Password:
☐ SSH Public Key

☒ Advanced Parameters

OK Cancel

New Host

General

Host Cluster: cluster0
Data Center: data0

☐ Use Foreman/Satellite

Name: serverc.lab.example.com
Comment:
Address:
SSH Port: 22

Authentication
User Name: root
☒ Password:
☐ SSH Public Key

☒ Advanced Parameters

OK Cancel

Question: 5

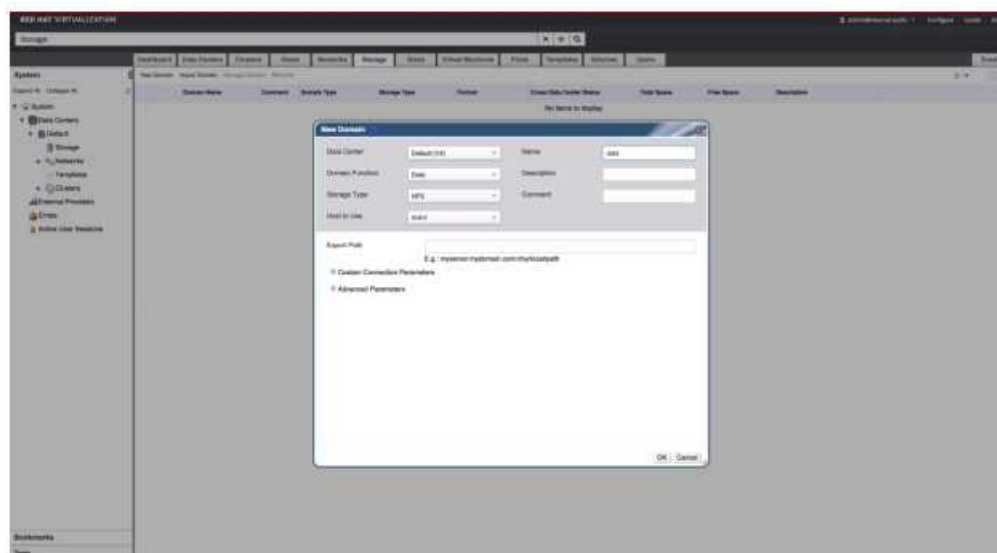
Task 5

Mount three storage domains (from Task 2)
Note: The nfs-server service may not be started

Answer: See the steps below for Solution.

Explanation:
Steps in Exhibits below

System -> Storage -> New Domain



Thank You for trying EX318 PDF Demo

To try our EX318 practice exam software visit link below

<https://www.braindumpscollection.com/EX318.html>

Start Your EX318 Preparation

Use Coupon "20OFF" for extra 20% discount on the purchase of Practice Test Software. Test your EX318 preparation with actual exam questions.