



BrainDumps
Collection

HP

HP2-Z34 Exam

HP Building HP FlexFabric Data Centers Exam

Thank you for Downloading HP2-Z34 exam PDF Demo

You can also try our HP2-Z34 practice exam software

Download Free Demo

<https://www.braindumpscollection.com/HP2-Z34.html>

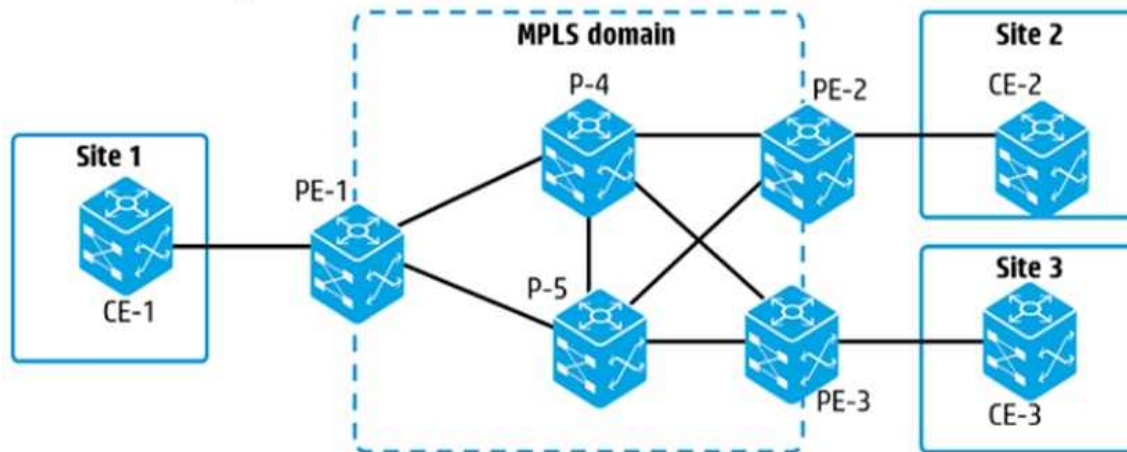
DEMO
VERSION

(LIMITED CONTENT)

Questions
& Answers

Question: 1

Refer to the exhibit



An MPLS VPLS solution (non-hierarchical) will connect the sites shown in the exhibit. Which pseudo wire (PW) connections must the administrator configure?

- A. A full mesh of PWs between every PE router that connects to a site and every P router between them
- B. A hub-and-spoke set of PWs between one P router and all PE routers that connect to a site
- C. A full mesh of PWs between every PE router that connects to a site
- D. A hub-and-spoke set of PWs between one PE router and other PE routers that connect to a site

Answer: A

Question: 2

An administrator is configuring an HP switch to run SPBM. Which Spanning Tree Protocol (STP) configuration is required?

- A. Disable STP.
- B. Ensure that the switch with the lowest IS-IS router ID has the lowest bridge priority.
- C. Set the spanning tree mode to ECT.
- D. Map all B-VLANs to MSTP instance 4092

Answer: C

Question: 3

An administrator creates two VPN instances on an HP Comware switch, in addition to the public instance. The switch implements routing protocols and MPLS. Which statement is correct about the routing tables and Label Forwarding Information Bases (LFIBs) maintained by the switch?

- A. The switch uses a single routing table and maintains a separate LFIB for each VPN instance
- B. The switch maintains a separate routing table and LFIB for each VPN instance, but the public tables automatically include entries from the other instances.
- C. The switch maintains a separate routing table and LFIB for each VPN instance.
- D. The switch maintains a separate routing table for each VPN instance and uses a single LFIB

Answer: B

Question: 4

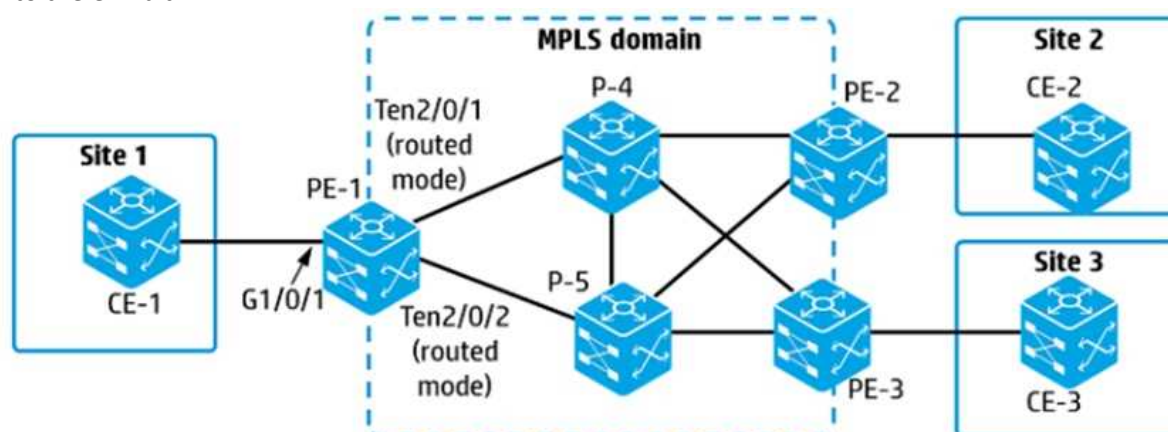
An HP Comware switch uses the MDC feature and has two MDCs defined. Administrators want MDC 1 and MDC 2 to be able to exchange traffic. How should the administrators complete the configuration?

- A. Create a virtual port with the same name on MDC 1 and MDC 2.
- B. Create a virtual port on MDC 0 and tag that port for the MDC 1 and MDC 2 management VLANs
- C. Connect a physical port that belongs to MDC 1 to a physical port that belongs to MDC 2
- D. Configure MDC 0 to permit data exchange and add a backplane mapping between MDC 1 and MDC 2.

Answer: D

Question: 5

Refer to the exhibit



An administrator is setting up an MPLS Layer 2 VPN between customer Sites 1 and 2 and is defining the pseudo wire (PW) ID for this purpose. How should the PW IDs and router values be configured?

- A. Set the PW ID to a different value on PE-1 and PE-2. The value on each router must match the label advertised by the peer for its loopback address.
- B. Set the PW ID to a different value on PE-1 and PE-2. Also use a different value from other PWs on these routers.
- C. Set the PW ID to the same value on PE-1 and PE-2. Use a different value from other PWs on these routers.

D. Set the PW ID to the same value on PE-1 and PE-2. The value on each router must match the S-VLAN ID for the associated service instance.

Answer: A

Question: 6

How does a non-hierarchical VPLS Martini solution prevent looping for broadcasts and multicasts?

- A. PEs use a hub and spoke topology, relying on the hub to distribute broadcasts and multicasts.
- B. PEs use split horizon operations, never forwarding a packet received on a pseudo wire (PW) over another PW.
- C. PEs implement Shortest Path Bridging (SPB) VLAN Mode (SPBV).
- D. PEs implement a version of Spanning Tree Protocol (STP). preferably Multiple STP (MSTP).

Answer: D

Question: 7

A large data center needs to extend its Layer 2 connectivity and isolate tenants who might use the same VLAN IDs Which technology accomplishes this goal?

- A. SPBM
- B. Data Center Bridging (DCB)
- C. Multi-VPN-Instance CE (MCE)
- D. TRILL

Answer: C

Thank You for trying HP2-Z34 PDF Demo

To try our HP2-Z34 practice exam software visit link below

<https://www.braindumpscollection.com/HP2-Z34.html>

Start Your HP2-Z34 Preparation

Use Coupon "20OFF" for extra 20% discount on the purchase of Practice Test Software. Test your HP2-Z34 preparation with actual exam questions.