



HP

HPE2-Z39 Exam

**HP Fast Track - Applying Aruba Switching Fundamentals for
Mobility Exam**

Thank you for Downloading HPE2-Z39 exam PDF Demo

You can also try our HPE2-Z39 practice exam software

Download Free Demo

<https://www.braindumpscollection.com/HPE2-Z39.html>

DEMO
VERSION

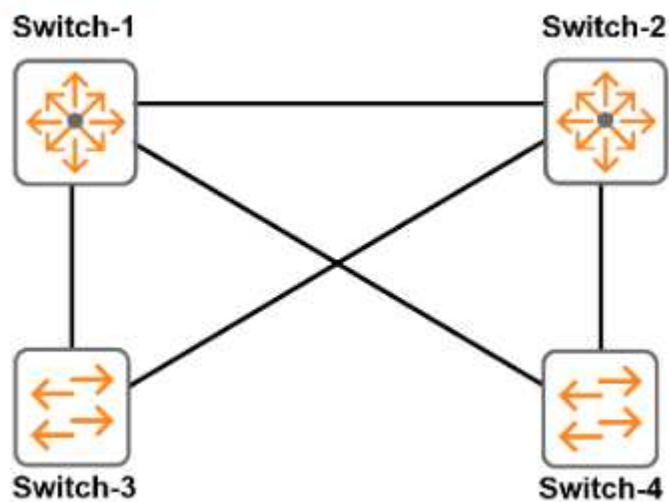
(LIMITED CONTENT)

**Questions
& Answers**

Version: 8.0

Question: 1

Refer to the exhibit.



All switches are ArubaOS switches that currently have the default spanning tree priority. Switch-1 should be the root of the spanning tree. If Switch-1 fails, Switch-2 should become root. Which configuration for spanning tree priorities ensures this behavior?

- A. priority 15 on Switch-1 and priority 14 on Switch-2
- B. priority 0 on Switch-1 and priority 15 on Switch-2
- C. priority 0 on Switch-1 and priority 1 on Switch-2
- D. priority 15 on Switch-1 and priority 9 on Switch-2

Answer: A

Question: 2

Refer to the exhibits.

Exhibit 1

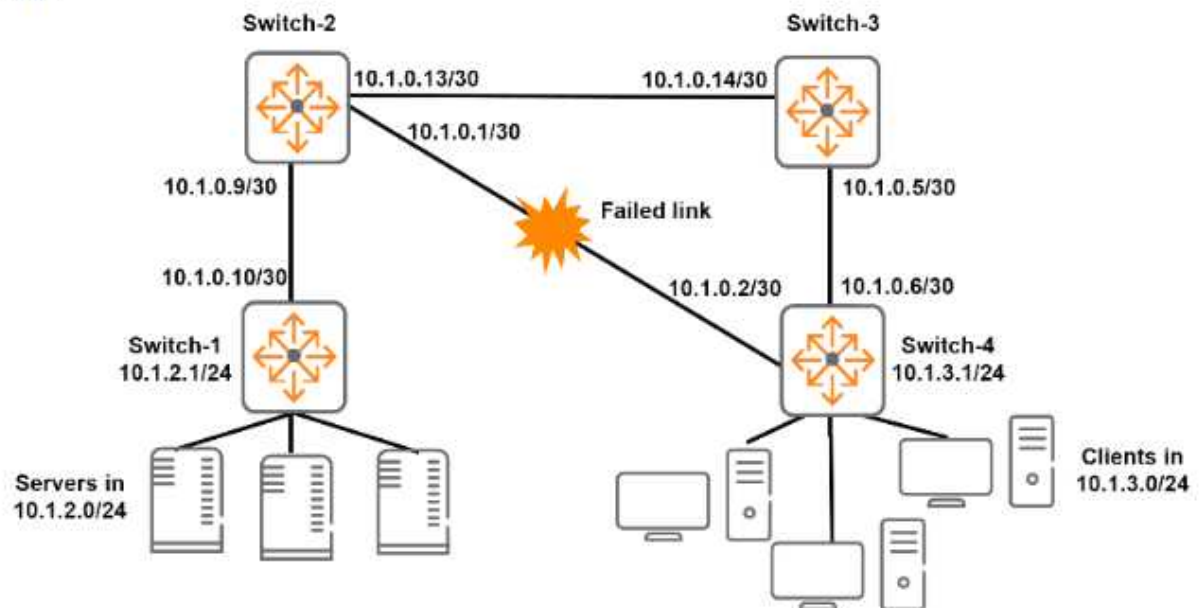


Exhibit 2

Switch-1# show ip route static

IP Route Entries						
Destination	Gateway	VLAN	Type	Sub-Type	Metric	Dist.
10.1.3.0/24	10.0.1.9	103	static		1	1
127.0.0.0/8	reject		static		0	0

Switch-2# show ip route static

IP Route Entries						
Destination	Gateway	VLAN	Type	Sub-Type	Metric	Dist.
10.1.2.0/24	10.1.0.10	103	static		1	1
127.0.0.0/8	reject		static		0	0

Switch-3# show ip route static

IP Route Entries						
Destination	Gateway	VLAN	Type	Sub-Type	Metric	Dist.
10.1.2.0/24	10.1.0.13	104	static		1	1
10.1.3.0/24	10.1.0.6	102	static		1	1
127.0.0.0/8	reject		static		0	0

Switch-4# show ip route static

IP Route Entries						
Destination	Gateway	VLAN	Type	Sub-Type	Metric	Dist.
10.1.2.0/24	10.1.0.5	102	static		1	1
127.0.0.0/8	reject		static		0	0

Exhibit 2 shows the IP routine tables for all the switches after the link between Switch-4 and Switch-2 failed. When this link fails, traffic between 10.1.3.0/24 and 10.1.2.0/24 is disrupted. What should the network administrator do to ensure that this traffic continues to flow if this link fails in the future? (Assume that routes on Switch-1 and Switch-3 are correct.)

A. Add a route to 10.1.3.0/24 through 10.1.3.1 on Switch-4.

B. Add a route to 10.1.2.0/24 through 10.1.0.14 on Switch-2.

C. Add a route to 10.1.3.0/24 through 10.1.0.14 on Switch-2

D. Add a route to 10.1.2.0/24 through 10.1.2.1 on Switch-4.

Answer: B

Question: 3

A network administrator suspects that interfaces in a link aggregation have been accidentally connected to multiple switches. The administrator wants to find the hostnames of the switches on the other side of the interfaces. How can the administrator find this information?

A. Use the show lacer command to view LACP information.

B. Use the show trunks command to view link aggregation information.

C. Use the show interface command to view detailed interface status.

D. Use the show lldp info remote-device command to view LLDP information.

Answer: D

Question: 4

Refer to the exhibit.

```
Switch-C# show spanning-tree
<-output omitted->
IST Mapped VLANs: 1-4094
Switch MAC Address   : 6c3be5-6208c0
Switch Priority       : 8192
Max Age               : 20
Max Hops              : 20
Forward Delay         : 15
Topology Change Count : 10
Time Since Last Change : 8 mins
CST Root MAC Address : 1c98ec-ab4b00
CST Root Priority      : 0
CST Root Path Cost    : 20000
CST Root Port         : Trk1
<-output omitted->
```

Port	Type	Cost	Priority	State	Designated Bridge	Hello Time	PtP	Edge
1	100/1000T	20000	128	Forwarding	6c3be5-6208c0	2	Yes	Yes
2	100/1000T	20000	128	Blocking	70106f-0d2100	2	Yes	No
3	100/1000T	20000	128	Forwarding	6c3be5-6208c0	2	Yes	No
Trk1		20000	64	Forwarding	1c98ec-ab4b00	2	Yes	No

Based on this ArubaOS switch output, what can a network administrator determine about the spanning tree topology?

- A. Port 2 is an edge port
- B. Port 3 will become the root port if the current root port becomes unavailable.
- C. Switch-C is the root bridge of the topology.
- D. Trk1 offers the lowest cost path to the common spanning tree root.

Answer: C

Question: 5

A network administrator manages an ArubaOS switch through the CLI. The administrator needs to configure an untagged VLAN assignment on a range of interfaces. How should the administrator enter the untagged command to complete this configuration?

- A. Create a manual, named interface range. Then access the context for the range and specify the VLAN ID with the untagged command.
- B. Access the context for a range of interfaces and specify the VLAN ID with the untagged command.
- C. Access the individual context for each of the interfaces and specify the VLAN ID with the untagged command.
- D. Access the VLAN context and specify a range of interfaces with the untagged command.

Answer: A

Thank You for trying HPE2-Z39 PDF Demo

To try our HPE2-Z39 practice exam software visit link below

<https://www.braindumpscollection.com/HPE2-Z39.html>

Start Your HPE2-Z39 Preparation

Use Coupon "20OFF" for extra 20% discount on the purchase of Practice Test Software. Test your HPE2-Z39 preparation with actual exam questions.