



**BrainDumps**  
**Collection**

# Network Appliance

## NS0-506 Exam

**NetApp Certified Implementation Engineer - SAN Clustered Data  
ONTAP**

**Thank you for Downloading NS0-506 exam PDF Demo**

You can also try our NS0-506 practice exam software

**Download Free Demo**

<https://www.braindumpscollection.com/NS0-506.html>

**DEMO**  
**VERSION**

(LIMITED CONTENT)

**Questions  
& Answers**

## Version: 9.0

---

### Question: 1

---

On a FAS8040, which port is used for FCoE connections?

- A. e0M
- B. e0P
- C. 0a
- D. e0h

---

**Answer: D**

---

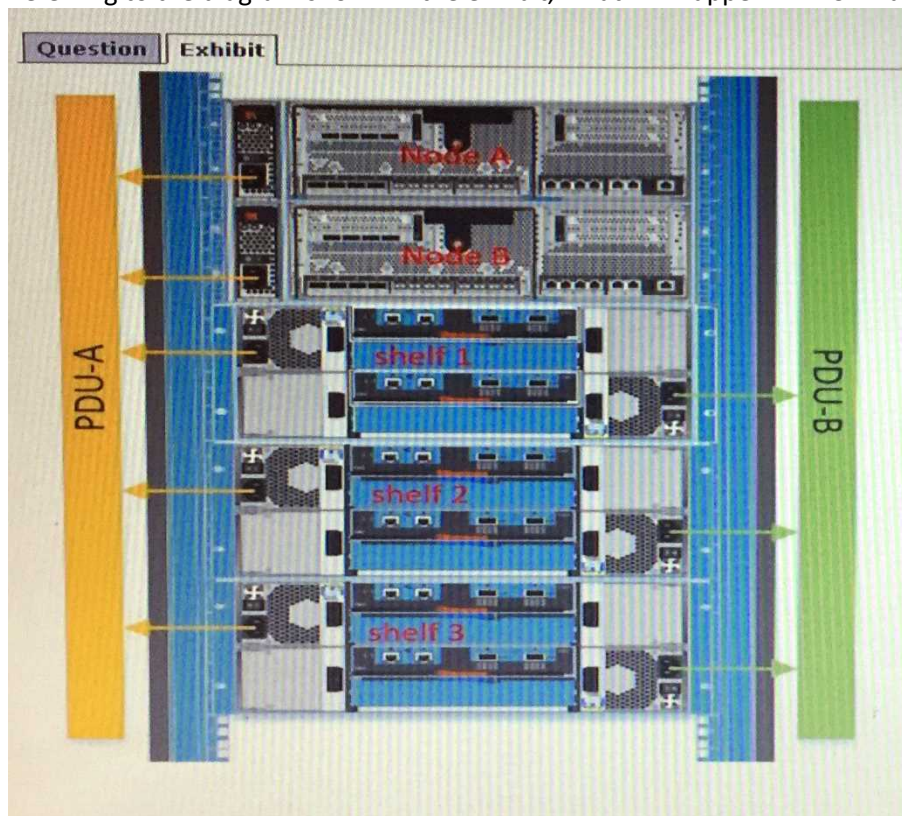
---

### Question: 2

---

Click the Exhibit button.

Referring to the diagram shown in the exhibit, what will happen if PDU-B fails?



- A. Both Node A and Node B will remain online and all disk shelves will remain online.
- B. Both Node A and Node B will remain online, but all disk shelves will immediately lose power and become inaccessible.
- C. Both Node A and Node B will immediately lose power and become inaccessible.

D. Node A will immediately lose power and become inaccessible. Node B will remain online.

---

**Answer: A**

---

---

**Question: 3**

---

Hosts and switches are connected to a FAS8040. Multiple FC-enabled SVMs have been created, and LUNs have been mapped to multiple hosts. During failover testing, one of the hosts lost connectivity to its LUNs.

What needs to be examined?

- A. FAS8040 ALUA configuration
- B. host multipath settings
- C. xhost iSCSI timeout values
- D. switch NPIV settings

---

**Answer: A**

---

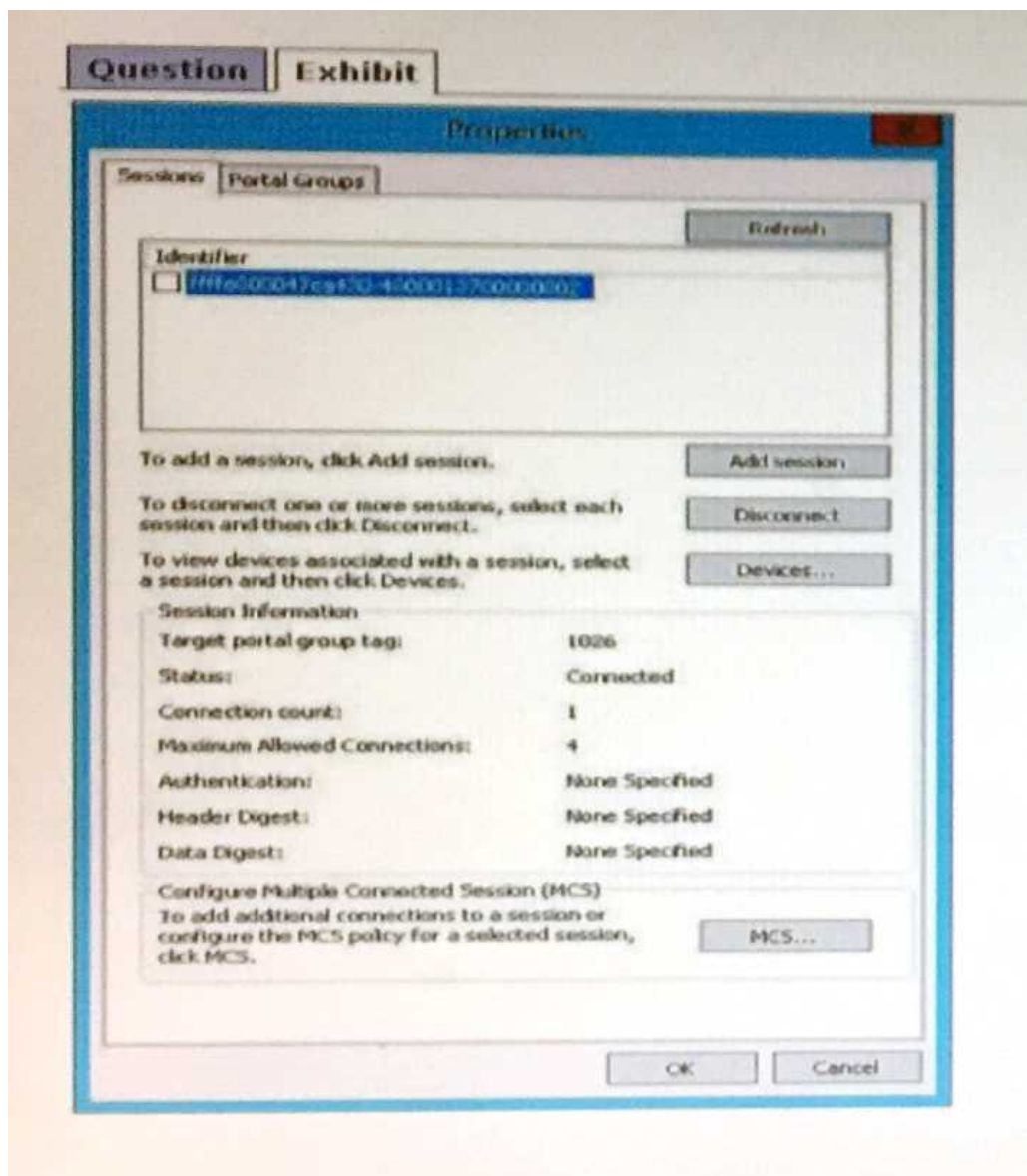
---

**Question: 4**

---

Click the Exhibit button.

Based on the exhibit, you are configuring a 4-node cluster with an iSCSI LIF on each node. You connect using the first LIF from a Windows Server 2012 host. How would you add the other three LIFs?



- A. Use the MCS button.
- B. Use the Devices button.
- C. Use the Add session button.
- D. Wait and then press the Refresh button until the other sessions appear.

---

**Answer: C**

---

---

### Question: 5

---

You have a 4-node FAS8040 cluster licensed for FCP and iSCSI. Each node has both FC and iSCSI LIFs. One of your Windows 2012 Servers has a single 8Gb FC port and a single 10 Gb Ethernet port with switched connectivity to the FC and Ethernet ports on the cluster. You need to use both ports on the host for multipath access to a LUN on the NetApp cluster. What will accomplish this task?

- A. NetApp Data ONTAP DSM for Windows MPIO
- B. FCoE HBA
- C. iSCSI HBA
- D. native Windows MPIO

---

**Answer: A**

---

---

**Question: 6**

---

A customer has a clustered Data ONTAP solution and needs to connect several Windows 2012 servers using iSCSI for LUN access.

Before the LUN can be seen, what must be configured on the host?

- A. the LUN partitioning
- B. the Host Utilities Kit
- C. the iSCSI software initiator
- D. the HBA queue depth

---

**Answer: B**

---

---

**Question: 7**

---

You have executed the following FC configuration workflow:

1. Verify IMT supported configuration.
2. Install VSC for VMware vSphere on a Windows Server.
3. Add the storage cluster to VSC and set recommended values.
4. Update host HBA firmware and BIOS.
5. Provision the LUN.
6. Manually create an igroup and add the host WWPNs into it.
7. Map the LUN to the igroup.
8. Create datastore and its containing LUNS and volumes.

In step 8, you are not able to see the LUNs you provisioned on your storage controller. When you run igroup show you see the ESX host's initiators; however, they are listed "not logged in".

What is the problem?

- A. You need to configure ALUA.
- B. The LUN was not put online.
- C. The LUN type is not set to type VMware.
- D. You need to configure zoning.

---

**Answer: D**

---

---

**Question: 8**

---

Click the Exhibit button.

You have a 2-node data ONTAP 8.3 cluster.

Based on the exhibit, which change must be made to make svm1 conform to iSCSI best practices?

```
cl01::> net int show -vserver
```

```
svm1 -data -protocol iscsi
```

```
Logical Status Network
```

```
Current Current Is
```

```
Vserver Interface Admin/Oper
```

```
Address/Mask Node Port Home
```

```
-----
```

```
-----
```

```
-----
```

```
svm1
```

```
up/up 10.204.34.25/24 cl01-01
```

```
a0a 434 true
```

```
cl01::>iscsi show -vserver
```

```
svm1
```

```
Vserver: svm1
```

```
Target Name: iqn.1992 -
```

```
08.com.netapp: sn.ca5eaa069c211
```

```
Target Alias: svm1
```

```
Administrative Status: up
```

A. The iSCSI LIFs must be moved to a VLAN higher than 1024.

B. An iSCSI LIF must be added to node cl01-02.

C. The Target Alias must be modified to match the Target Name.

D. The iSCSI LIFs must be moved to a physical interface; iSCSI LIFs are not supported on top of an ifgrp.

---

**Answer: C**

---

---

### Question: 9

---

Which three environmental or physical requirements need to be met when designing a SAN solution? (Choose three.)

A. rack space

B. cooling

C. clustered Data ONTAP version

D. IOPS

E. power

---

**Answer: A, C, D**

---

---

### Question: 10

---

You have a large, heterogeneous SAN environment. You are asked to gather information for all hosts, HBAs, switches, and storage. You are also told that you must collect this information over network

protocols without agents.

Which two NetApp tools allow you to perform this task? (Choose two.)

- A. OnCommand Insight
- B. OnCommand Report
- C. OnCommand Unified Manager
- D. nSANity

---

**Answer: B, D**

---

**Thank You for trying NS0-506 PDF Demo**

To try our NS0-506 practice exam software visit link below

<https://www.braindumpscollection.com/NS0-506.html>

## Start Your NS0-506 Preparation

Use Coupon "20OFF" for extra 20% discount on the purchase of Practice Test Software. Test your NS0-506 preparation with actual exam questions.